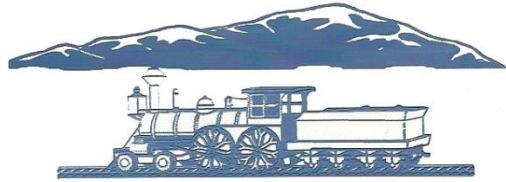


PIKES PEAK "N" GINEERS

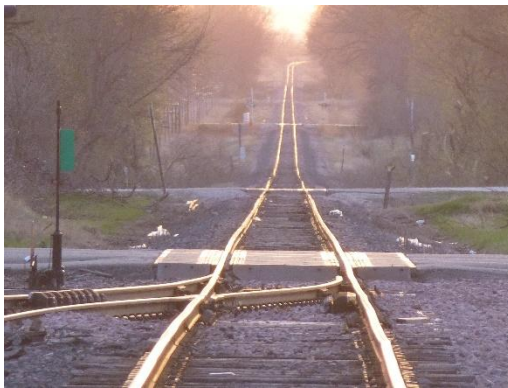


NEWS LETTER OF THE PIKES PEAK "N"GINEERS MODEL RAILROAD CLUB

Celebrating 26 years of model railroading

December 2015

RAILROADING SINCE OCTOBER 13, 1989



Sun on the rails, Emmetsburg, IA D&RG 168 day it was loaded

PPNG Calendar for December 2015

- Dec. 4, 5 & 6:** TECO 26, Santa Fe theme, See story below
- Dec. 13:** Setup at Fine Art Center, see story below
- Dec. 14 through January 2nd:** Run trains at Fine Art Center
- Dec. 18:** Corporate meeting and elections
- Jan. 4, 2015:** Tear down

Other Shows and Events

- Jan. 4, 2016:** Tear down
- March 11 – 14, 2016:** Garden City Show
- April 23 & 24:** TECO 27
- June 18 & 19:** TECO 28
- Dec. 2, 3 & 4:** TECO 29

Superintendent's Corner

Hi Members!

Well here it is the last month in the year. While we do not have much happening, most of the month we will be busy. The first weekend of the month which is Dec. 4 through the 6, yes a three day show, is TECO 26. We will set up the MTL a 12:30 on the 4th (Friday) and try to have it finished by 4 PM. On Saturday we will run from 9 AM to 4 PM, be at the show at 8 AM to clean track and have trains running at 9. On Sunday we run from 10 AM to 3 PM, and then disassemble the MTL.

Our second show is at the Fine Arts Center for their Christmas Special. We will set the MTL up on December 13th, a Sunday, and will remain assemble until January 4th when it will be dismantled. A sign-up sheet has been placed in the Club Room on the bulletin board. If no-one can be at the Center to run trains we will just have it as a static display. Run times are Sat. through Thursday 10 AM to 4 PM and 10 AM to 7 PM on Friday.

Our Corporate Meeting will be at the Club Room on Dec.18th which is the date we vote on the board members.

Have a good month and a Merry Christmas.

Lester Coburn
Superintendent
Pikes Peak "N" Gineers

TECO 26, Santa Fe Theme

The Club will start setting up the MTL at 12:30pm on Friday December 4. The Doors will open to the public around 4pm and go till about 7pm or when I decide it's time to close for the night. Clubs and Vendors can get in after 7am on Saturday. Doors open to early buyers at 8am and open to the public at 9am, doors close at 4pm
Clubs and vendors can get in at 9am on Sunday, doors open to the public at 10am and closes at 3pm. Sunday will be free to all military with ID.
If you have any Santa Fe equipment this is the show to show it off.

Display at Fine Arts Center

PPNG has been invited to setup the MTL at the Fine Arts Center from December 13, 2015 through January 3, 2016. We will be setup in our own room next to the Pikes Peak & Sothern's room. This program should be great publicity for the clubs and model railroading.
As of this writing the hours are 10am to 4pm daily except Friday. Friday hours are 10am to 7pm. We will be setting up a schedule where everyone who can work the display to sign up. We would like to have at least two people per day to operate. For those days we don't have anyone available we can keep the display closed. It is recommended to take your trains' home every day just to be on the safe side.

You may take your own lunch but have to eat it in the loading dock area, only water is allowed at the layout. Do not drink in front of the public as the FAC has policy of no food or drink in the facility.

Editor's Musings

This is the last Railhead of 2015. The club did quite a few events in the 2015, 4 TECO show, 2 setups at Village at Skyline, A week long setup at the Colorado Springs Senior Center, a trip to Garden City and ran trains with the dinosaurs. Field trips to the Como Depot dedication, a look at the Calhan depot, Ulrich Locomotive tour, layout tour in the Denver area. A great trip on the Durango & Silverton RR.

Now it's time to think about what we are going to do in 2016. Besides those events we already have setup for 2016 be thinking about field trips and train rides. Think about clinics subjects so we can do a few clinics next year.

Merry Christmas & Happy New Year!!!